

SWISS MEDTECH WEBINAR: EFFICIENTLY REDUCE YOUR CARBON FOOTPRINT

Digital or analog
09.04.2024

SCOPE 1 AND 2

HOW IT STARTED

First comes first

- Focus on the largest consumers
- Focus on the relevant data that can be measured easily
- Guestimate the data for the rest of the entities
- Work out baseline 2021

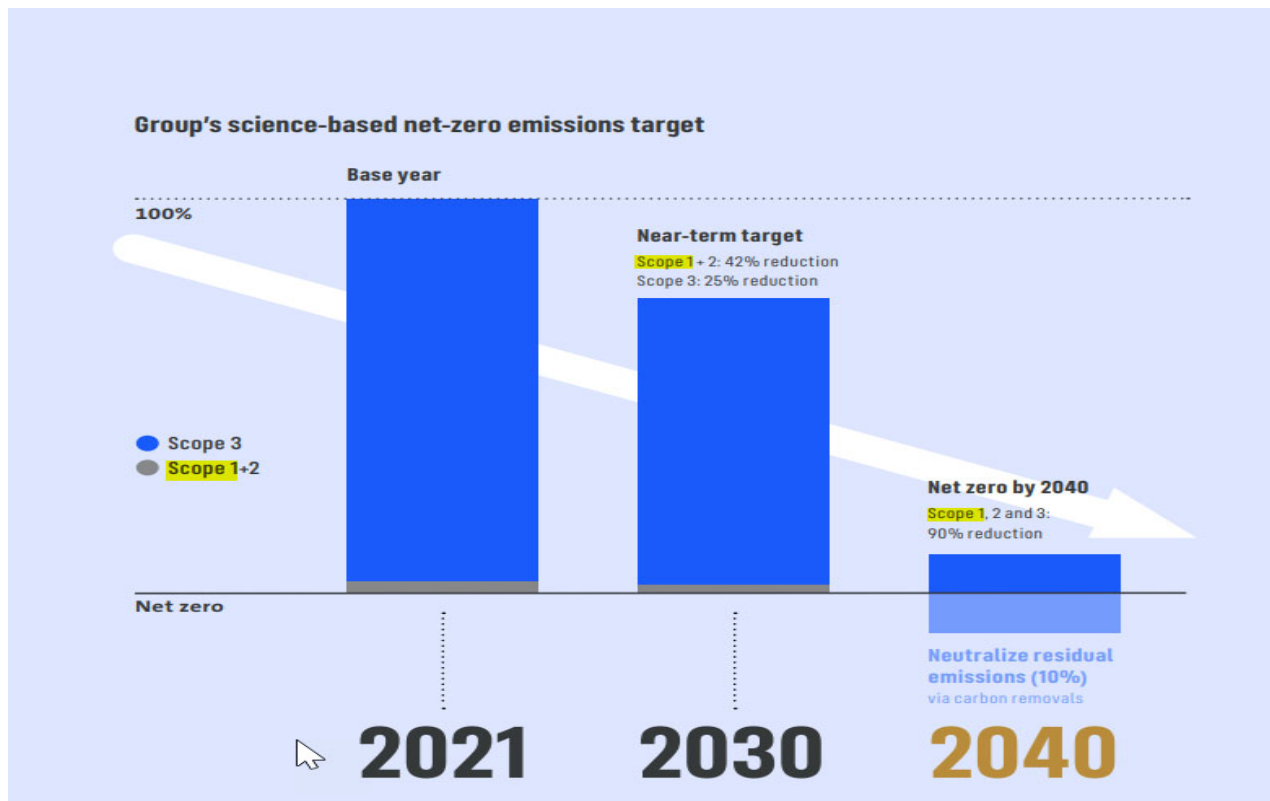
29 entities (mainly factories)

Constantly review

- How is our internal systems world changing?
- Are we changing work processes?
- Continuously monitor the ESG environment internally and externally

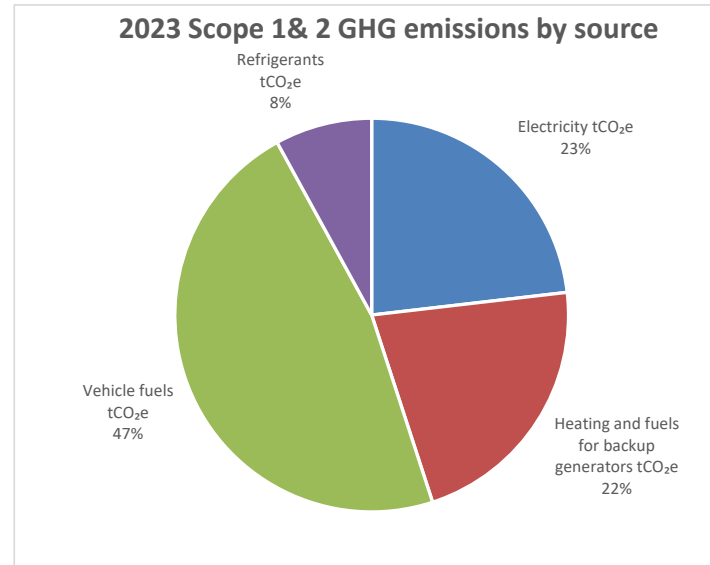
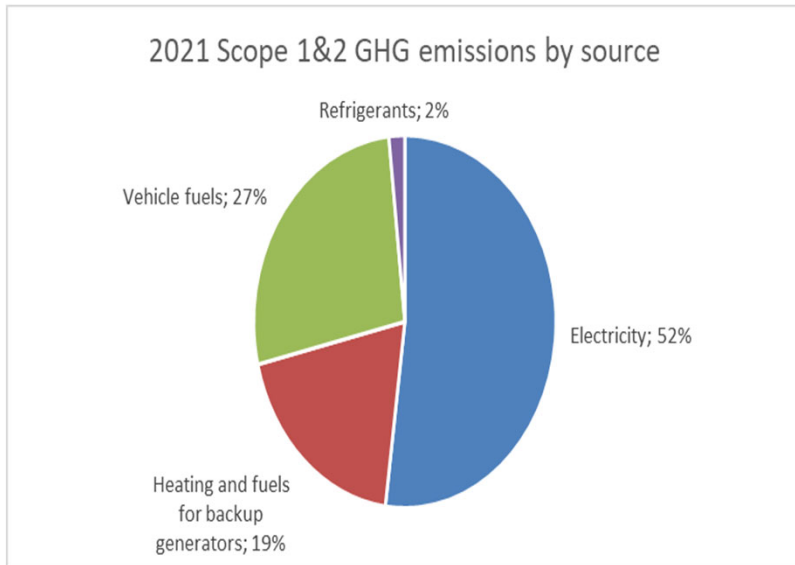
STRAUMANN 2030 AND 2040 SBTI TARGETS

WITH 2021 BASELINE



SCOPE 1 & 2 EMISSIONS DEVELOPMENT

OUR EFFORTS PAID OFF WHEN IT COMES TO SWITCHING TO RENEWABLE ELECTRICITY- CURRENTLY THE FOCUS IS ON VEHICLE FLEET



*excluding Grafelfing, Rheinfelden, Bangalore, China campus, Oximatec, STIT Milano

INVOLVEMENT / ENGAGEMENT

Pillars

- Build up strategic pillars that concentrate on topic
- Build up strategic pillars that concentrate on people
- Each Pillar is headed by 2 members of the Ops Lead Team

Projects

- Each Pillar consists of actionable Drivers (projects)
- Teams are developing their own projects within the Pillar given
- Each Driver has a Leader
- Each Pillar has regular exchanges with the Lead Team

INVOLVEMENT / ENGAGEMENT

What we focus on

- 1 Support **innovation** whilst improving **COGS**
- 2 Establish a **Customer obsessed E2E SC**
- 3 Drive **QARA** as a **competitive advantage**
- 4 Ensure **Capacity** to support the Growth
- 5 Deliver **ESG** commitments

How we achieve it

- 6 Engage and Grow People
- 7 Embrace the Digital Transformation
- 8 Build a solid Lean and Culture Journey to Excellence in operations

ALL IS SUSTAINABILITY

Learning

- Everything we touch has somehow a connection point into SUSTAINABILITY
- Social responsibility taken into account
- Ideas from internal and external

Regulatory environment

- Frameworks
 - TCFD, GRI, CSRD, SBTi, ESRS,
- Regulations
 - WEEE, PFAS,

ESG DATA GATHERING

CREATING A CENTRAL DATABASE FOR BETTER RISK MANAGEMENT AND COMPLIANCE WITHIN SULTYRICS

Risk, ESG, HS, logistics and facility have concluded to prepare a common data structure and single source of truth in Sulytics.

Data collection and accuracy

- Extend data collection 2024 to all remaining entities (sense of proportion) – 123 in total
- Consolidation of various excel sheets
- Using existing update processes and cycles
- Improve accuracy of data
- Change from one update cycle p.A. to 3-4 update cycles



Risks and regulatory requirements

- Answering questions to TCFD, auditors on various topics of STRM infrastructure worldwide, CSRD
- Clearer specific risk assessments (not ICS) in contrast to the generic risk assessment by consultants
- Control of measures done in locations ESG, Infra, Risk
- Tailored proposals from ESG, Infra, Risk to improve local situation

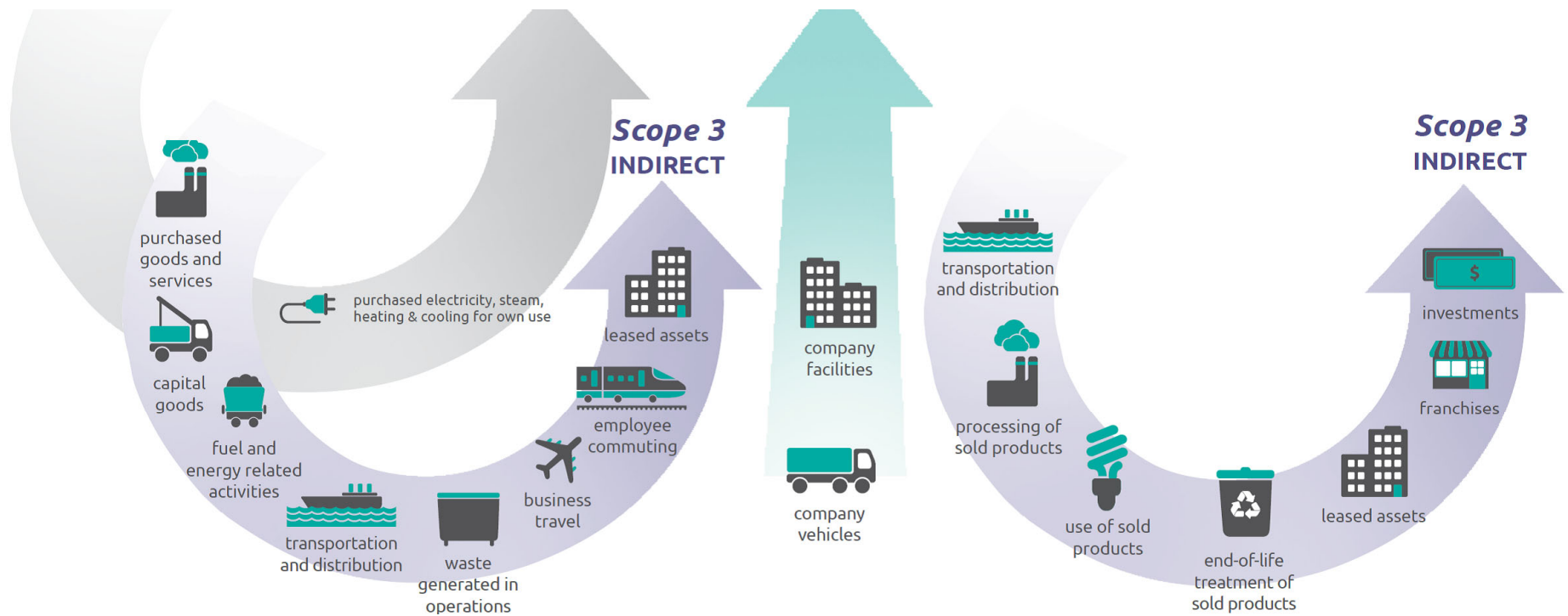
Comparison and best practices sharing

- Improvements based on global experiences, Idea gathering / sharing from other locations
- Improvements based on other companies experiences

SCOPE 3

WHAT IS SCOPE 3

INDIRECT EMISSIONS GENERATED BY COMPANIES ACROSS THE VALUE CHAIN



EXAMPLE OF HOW SCOPE 3 EMISSIONS ARE GENERATED BY STRAUMANN



PURCHASED GOODS AND SERVICES

Emissions produced by suppliers (i.e titanium) who source and produce the implant or clear aligners component part and raw materials



UPSTREAM DISTRIBUTION AND TRANSPORTATION

Emissions generated when purchased goods and services are transported by third party from a suppliers to the manufacturing site



WASTE GENERATED IN THE OPERATIONS

Emissions from the disposal and treatment of all streams of waste generated due to the Straumann's operations



USE OF SOLD PRODUCT

Emissions generated when HCPs buy our scanners, use it over its lifetime and generate energy during that time

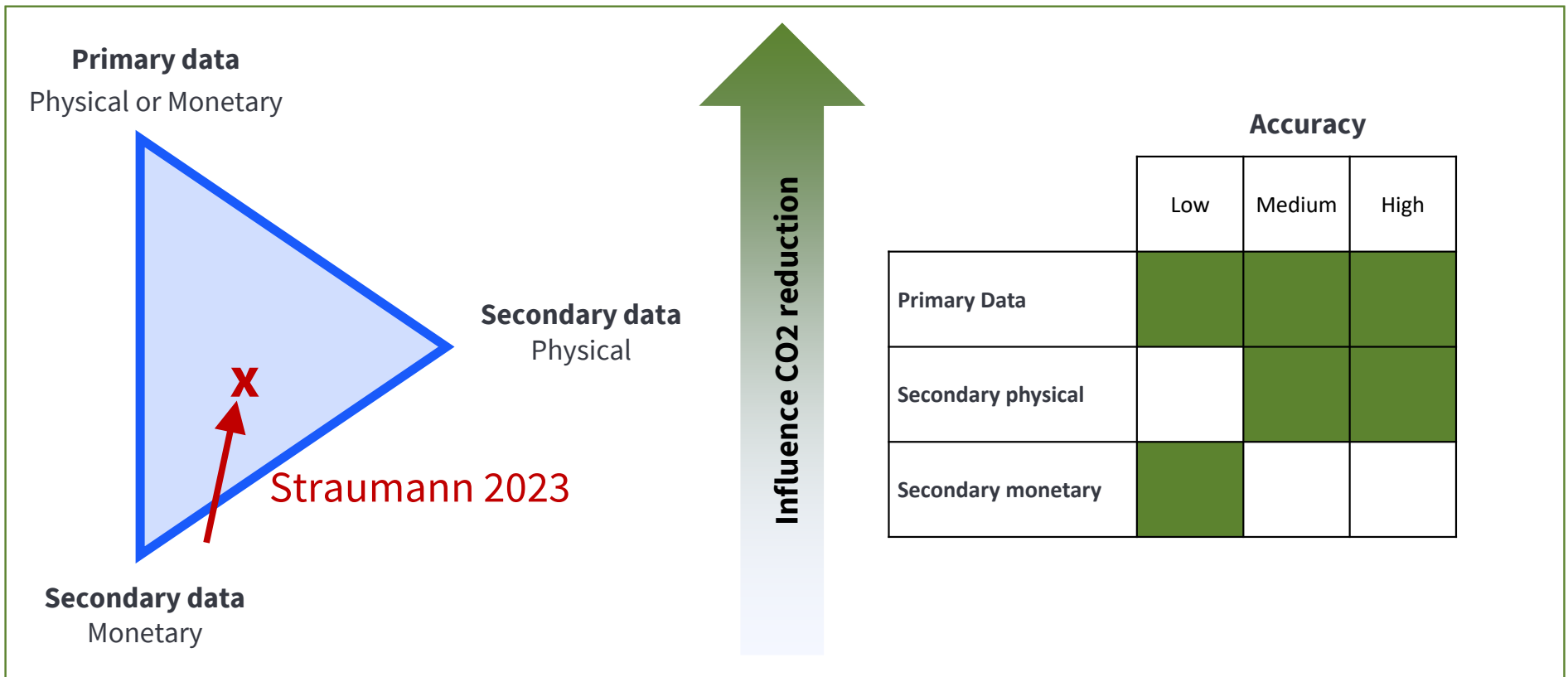


END OF LIFE TREATMENT

Emissions generated when our products (except implants) are scrapped, landfilled, incinerated or recycled

PURCHASED GOODS AND SERVICES METHODOLOGY

DATA ACCURACY IS A CONTINUOUS PROGRESS



MAIN CHALLENGES ON SCOPE 3



LACK OF KNOWLEDGE ON GHG EMISSIONS



POOR DATA QUALITY, ACCURACY AND AVAILABILITY



STAKEHOLDER ENGAGEMENT/ACCOUNTABILITY



LIMITED INTEGRATION WITHIN THE BUSINESS (PROCESSES)

WHAT ARE WE CURRENTLY DOING AT STRAUMANN

WORKING ON CHANGE MANAGEMENT, EDUCATION AND IMPROVEMENT OF CALCULATION METHODOLOGY & SYSTEMS



General for all categories:

- Change management & communication plans (to be deployed this year)
- Improving methodology on all categories and data accuracy
- Streamlining governance including processes/policies

Purchased goods and services:

- Implementing a new tool Sievo based on data spend from SAP, but in parallel collecting information from different suppliers via IntegrityNext. We will move to CDP in the future for our biggest suppliers.
- We are currently developing a supplier management program and we are engaging with suppliers to help them set their own emissions targets.

Upstream transportation and distribution:

- Currently deploying a new logistics tool that can allow us to capture more accurately our GHG emissions

Employee commuting:

- We are currently assessing an app to track employee commute and provide us with real data

THANK YOU
ANY QUESTIONS?